



## A Series LifeStar® VS Aquatic Pump

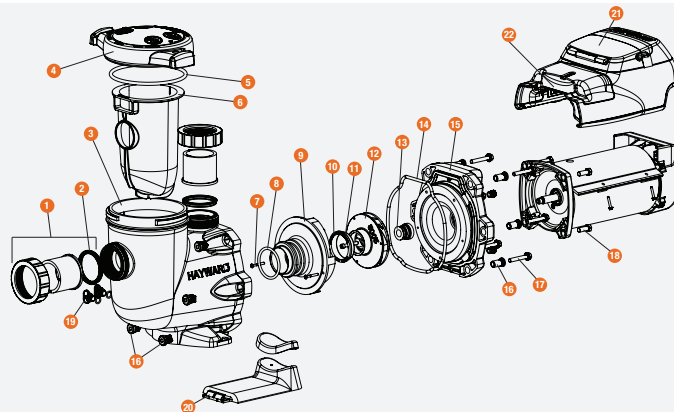
VARIABLE SPEED 600 - 3450 RPM,  
2 HP, SINGLE PHASE 230V, TEFC

### KEY FEATURES

- Ideal for Sensitive Aquatic Environments or Salt Water Systems
- Multi-Position or Detachable / Wall Mount Digital Control Interface with Password Protection
- All Wetted Hardware Manufactured from 316 Stainless Steel
- Silicon Carbide/Silicon Carbide Shaft Seal Suitable for Fresh and Salt Water Use
- Corrosion Resistant Housing
- Self-Priming Pump
- Suitable For High Volume Pumping
- Clear High Capacity Basket Strainer Lid for Visual Inspection
- Elevated Base Ensures Better Ventilation and Protection from Flooding
- Perforated HDPE Basket

## TECHNICAL INFORMATION

### EXPLODED VIEW



### SPECIFICATIONS

<b>PUMP HOUSING</b>	Glass Filled Polypropylene	<b>MOTOR BOLTS</b>	316 SS
<b>CONNECTIONS</b>	2" True Union Socket	<b>HOUSING BOLTS</b>	316 SS
<b>MOTOR SHAFT</b>	303 SS (Non-Wetted)	<b>MOTORS</b>	Single Phase - Totally Enclosed Fan Cooled (TEFC)
<b>SHAFT FACE SEAL</b>	Silicon Carbide/Silicon Carbide	<b>HP RATINGS</b>	2
<b>SHAFT SECONDARY SEAL</b>	EPDM	<b>STRAINER BASKET</b>	HDPE, 1/8" Perf
<b>ALL WETTED HARDWARE</b>	316 SS (Impeller Insert, Impeller Screw and 2 Diffuser Screws)	<b>SERVICE FACTOR</b>	1.35
<b>MAIN HOUSING GASKET</b>	EPDM	<b>VOLTAGE SUPPLY</b>	230V, 60 Hz

# A Series LifeStar® VS Aquatic Pump

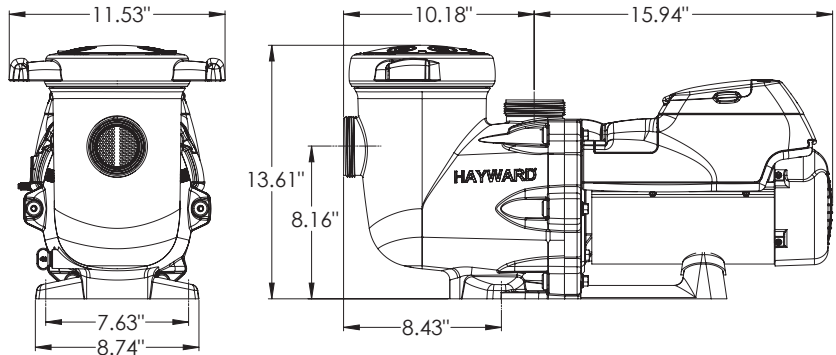
VARIABLE SPEED 600 - 3450 RPM,  
2 HP, SINGLE PHASE 230V, TEFC

## TECHNICAL INFORMATION, CONTINUED

### PARTS LIST

- |  |  |
|--|--|
| 1. True Union Connection and Nut with O-Ring | 12. Impellers with Impeller Screws     |
| 2. Union Gasket                              | 13. Shaft Seal Assembly                |
| 3. Pump Strainer Housing                     | 14. Housing O-Ring                     |
| 4. Strainer Cover                            | 15. Seal Plate                         |
| 5. Strainer Cover O-Ring                     | 16. Housing Insert/Seal Plate Spacer   |
| 6. Strainer Basket                           | 17. Housing Bolt                       |
| 7. Diffuser Screw                            | 18. Motor Bolt                         |
| 8. Diffuser O-Ring                           | 19. Drain Plug with O-Ring             |
| 9. Diffuser                                  | 20. Bracket, Motor Support             |
| 10. Impeller Screw                           | 21. Motor Drive Display Cover          |
| 11. Impeller Ring                            | 22. Digital Control Interface Assembly |

### DIAGRAM

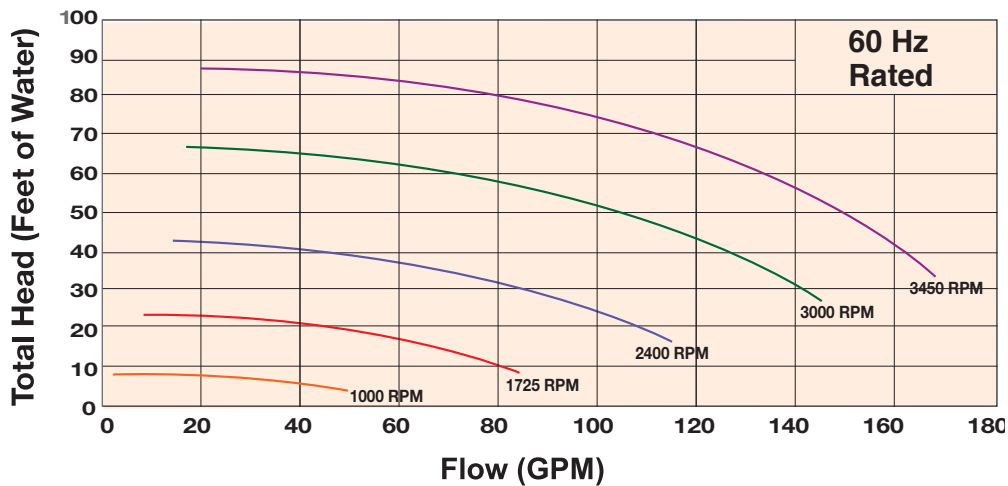


Dimensions are subject to change without notice - consult factory for installation information.

### AVAILABLE SPARE PARTS

- |                           |               |
|---------------------------|---------------|
| 1. True Union Connections | 3. Shaft Seal |
| 2. Hardware               | 4. Impellers  |

### PUMP PERFORMANCE CURVE



### DIGITAL CONTROL INTERFACE



 Hayward is a registered trademark of Hayward Industries, Inc. © 2018 Hayward Industries, Inc.

USA: 1.888.429.4635 • Fax: 1.888.778.8410 • One Hayward Industrial Drive • Clemmons, NC 27012 • Email: hfcsales@hayward.com  
 Canada: 1.888.238.7665 • Fax: 1.905.829.3636 • 2880 Plymouth Drive • Oakville, ON L6H 5R4 • Email: hfcanada@hayward.com  
 Visit us at: haywardflowcontrol.com