

# RK150PE

PROTEIN FRACTIONATOR  
FLOW RATE 150GPM @ 2 MIN. DWELL  
HDPE Molded Tank

internal rinse system  
seawater - 1 nozzle jet  
retracting

riser configuration

external rinse system  
high pressure - freshwater  
4 nozzle jets.

**L** effluent drain union  
back-side of  
upper riser chamber  
(not shown)

**K** electronic interval timer  
3/4" fipt (rinse system) x2

venturi anti-siphon  
air/ozone intake

Kynar venturi  
220 cfh gas injection  
6230 clh. w/ ozone  
& anti-syphon connx.

**I** filter discharge  
return manifold  
4.0"

Dedicated venturi pump  
13.8/6.9 amp max.  
@115/230v 50/60Hz 1ph.

HDPE Pump pad  
18"x24"x3"

**O** ozone vent union

upper riser chamber  
clear acrylic

Clear Sight Gauge  
(Tank level monitor)

2" vent - (discharge manifold)

**M** 3" intake SCH80 flange Soc  
(standard locations  
@ 90° or 270°.)

101"

reaction chamber  
HDPE custom molded  
36" dia. (46cm dia.)

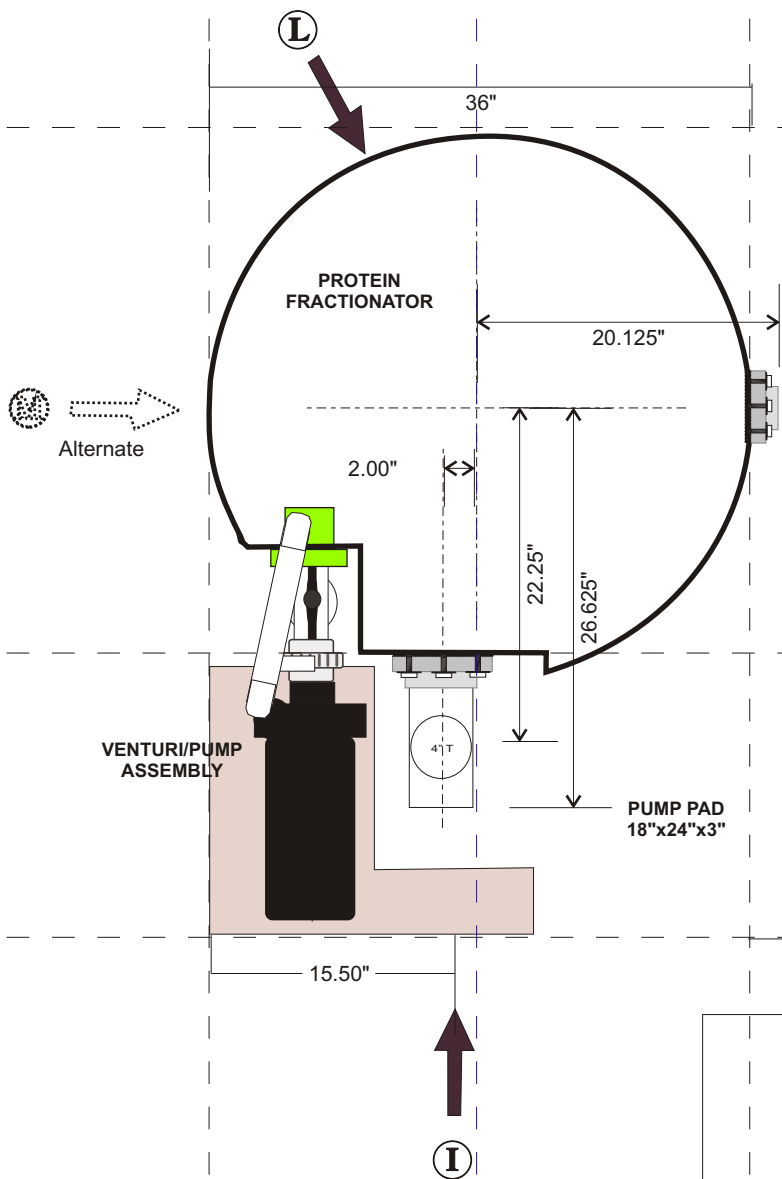
**N** level control valve

Floor

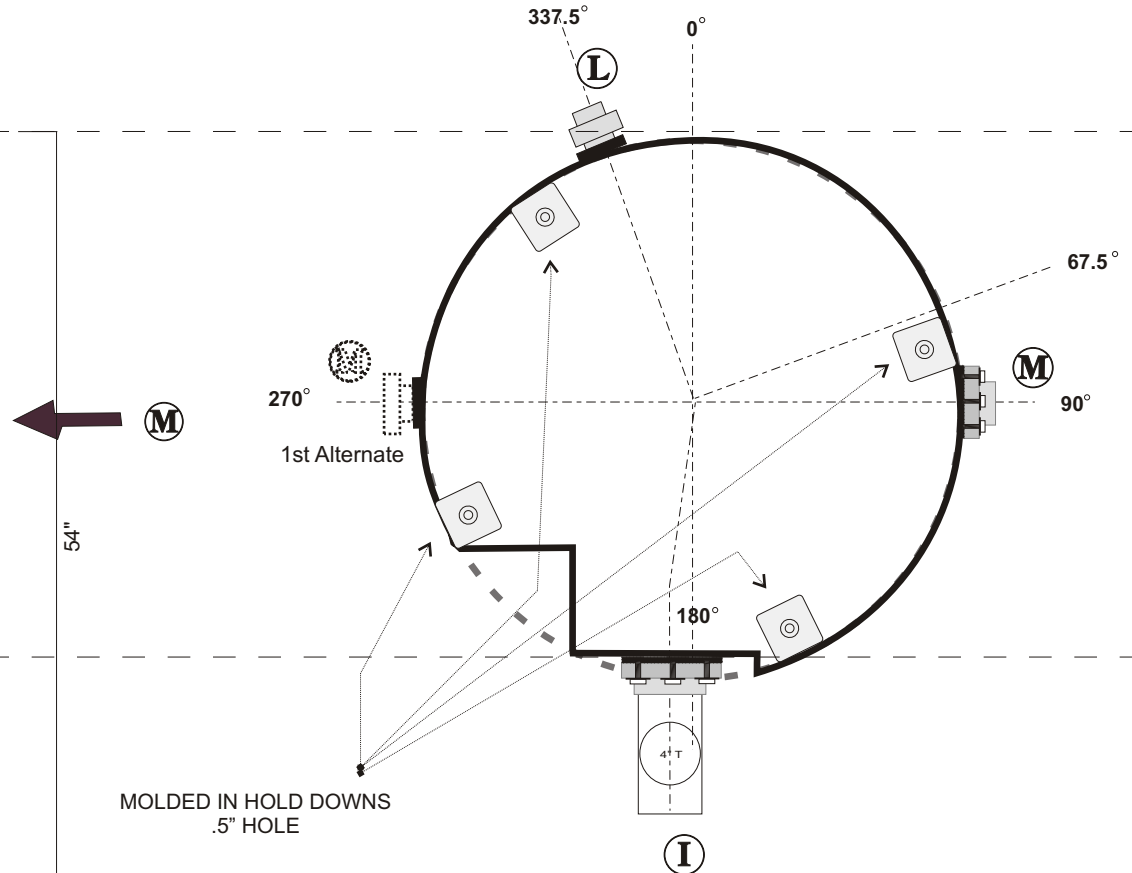
36.0"

# RK150PE PROTEIN FRACTIONATOR PORT CONNECTION CONFIGURATIONS

TOP VIEW:



## PORT ORIENTATION



© copyright 2000-2008 RK2 SYSTEMS, INC.  
Any use of this design without the written permission of RK2 SYSTEMS is prohibited.

- Ⓜ = FILTER INLET. 3" PVC STD. FLANGE, HORIZONTAL POSITION. HEIGHT = 58.50"
- Ⓛ = EFFLUENT DRAIN. 2" PVC SCH40 SLIP UNION, HORIZONTAL POSITION. HEIGHT = 72.75".
- Ⓢ = FILTER DISCHARGE. 4" PVC SCH40 SLIP TEE, HORIZONTAL POSITION. HEIGHT = 60.0"  
GRAVITY DRAIN, INITIAL 12" MUST DROP VERTICALLY, NO LATERAL PIPING.
- Ⓞ = OZONE VENT. 1" PVC SCH40 SLIP UNION. HEIGHT = 101"
- Ⓚ = RINSE SYSTEMS. ELECTRONIC CONTROL VALVES 3/4 MIPT.  
2 - 9V BATTERY PER VALVE.